

## Features

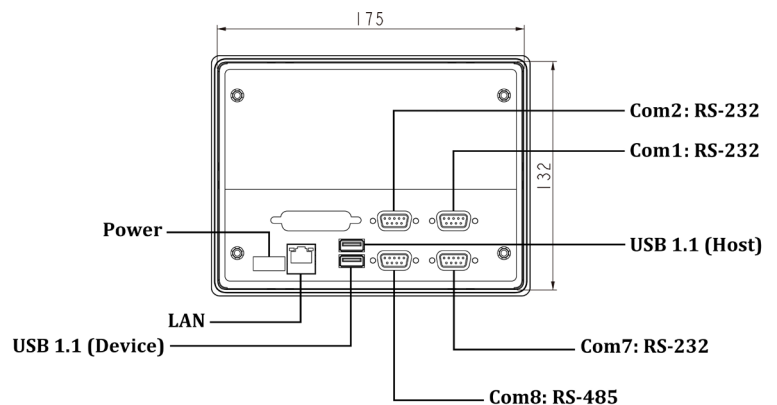
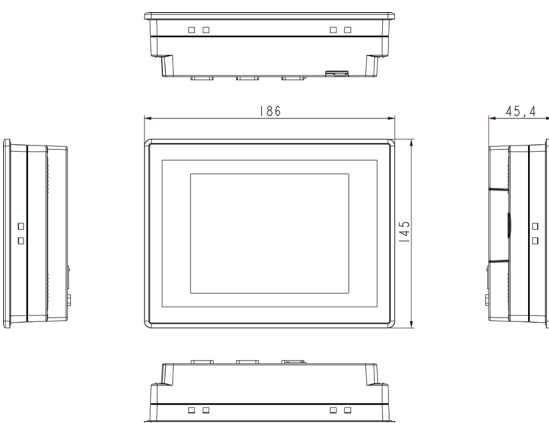
- 7" 800 x 480 TFT LCD Display
- Fanless cooling system with RISC CPU
- Ultra Slim design: thickness 45mm
- Super light weight: 0.9 kg
- Serial Ports (RS-232/RS-485)

## Specifications

System	
CPU	RISC CPU
Operating System	Microsoft Windows CE 5.0 / 6.0
System Memory	SDRAM 128 Mbytes (256 Mbytes option)
Storage Memory	CF Card 256Mbytes (System Data) CF Card 2Gbytes (User Data)
NVRAM	1 Mbytes battery backup SRAM (option)
EEPROM	128/256 bytes 12C Type
Ethernet Port	1 x 10/100 base-T Ethernet Port
Serial Port (64 Bytes FIFO)	RS232 x 1 RS485 x 1 (Tx, Rx only)
USB Port	USB v1.1 host port x 1 USB v1.1 device port x 1
RTC	Battery backup external RTC
Boot ROM	512 Kbytes, up to 1 Mbytes
Watchdog Timer	External Watchdog Timer
LCD Display	
Size/Type	7"
Max. Resolution	800 x 480 TFT
Backlight Life	50,000 hours
Luminance	350 cd / m <sup>2</sup>
Max. Colors	262,144
Software	
Software	Includes WinCE 5.0 , 6.0 OPC Server, VB.NET WinCE OPC client sample

Touch Screen	
Type	4/5-wired resistance touch panel
Resolution	Up to 800 x 480
Light Transmission	Above 80%
Lifespan	10 million touches at single point
Power System	
Connector	2-pin DC jack for power adapter
Power Input	12v DC (9~36v)
Power Consumption	2.1W
Battery	3v Li-Battery with battery fail detection
Mechanical & Environmental	
Operating Temp.	0 ~ 65°C
Storage Temp.	-20 ~ 60°C (-4 ~ 140°F)
Operating Humidity	5 ~ 95% RH
Dimensions (W x D x H)	188 x 45 x 145 mm
Weight (Net)	0.9kg
General	
Certification	CE / FCC
Front Panel	PC + ABS
OS Support	Microsoft Windows CE 5.0 / 6.0

## <Dimensions and Cutout>



8.4"



### Features

- 8.4" SVGA (800 x 600) color TFT LCD display
- Fanless cooling system with X86 CPU
- Ultra Slim design: thickness 45mm
- Super light weight: 1.3 kg
- Over-voltage protection fuse

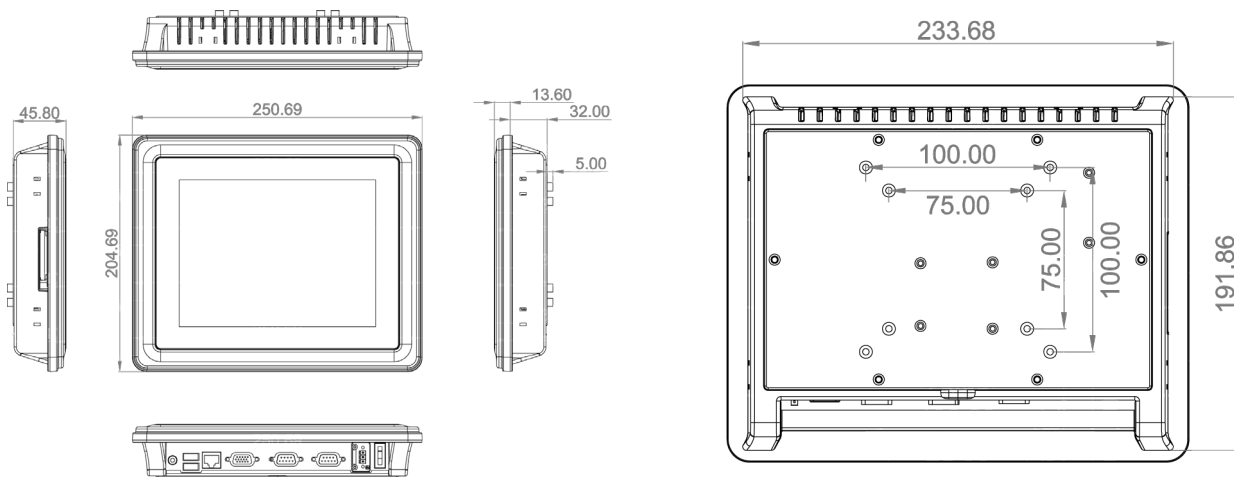
### Specifications

System	
Main Board	SBC87830
CPU	X86 CPU
Chipset	Intel® 945GSE
System Memory	1 x DDR2 SODIMM max. up to 2GB
Storage Memory	1 x CompactFlash™
BIOS	AMI 8 Mbit with RPL/PXE LAN boot ROM
Watchdog Timer	255 levels, 1~255 sec.
Onboard Graphics	Integrated in Intel® 945GSE
Expansion Interface	1 x Mini card
LCD Panel	
Size/Display Type	8.4" SVGA TFT LCD
Max. Resolution	800 x 600
Brightness (cd/m2)	250 nits
Viewing Angel (H/V)	120°/100°
Touch Screen Type	Resistive type
I/O Connector	
I/O Connector	1 x RS-232 (COM 2) 1 x RS-232/422/485 (COM 1) 2 x USB2.0 1 x 10/100/1000Mbps Ethernet 1 x Audio (Line-out) 1 x VGA

Mechanical & Environmental	
Operating Temp.	0 ~ 50°C (32 ~ 122°F) (with W.T. DRAM/HDD in airflow condition) 0°C~45°C (32°F~113°F) (with W.T. DRAM/HDD)
Relative humidity	10%~95% @40°C; non-condensing
Operation vibration	2G, 5~500Hz, random for CompactFlash™
Ingress Protection	Front panel: IP65, NEMA 4 rugged protection
Dimensions (W x D x H)	250.7 x 45.8 x 204.7 mm (9.87" x 1.80" x 8.06")
Weight (net/gross)	1.3 kg (2.87 lb)/2.25 kg (4.96 lb)
Power System	
Power Input(DC version)	10~30VDC with fuse over-current protection
Power Input(AC version)	AC-DC 60W power adapter
General	
Certification	CE, FCC, CCC compliance
Front Bezel	Plastic front bezel

WinCE OPC Based HMI

### <Dimensions and Cutout>



10.4"



### Features

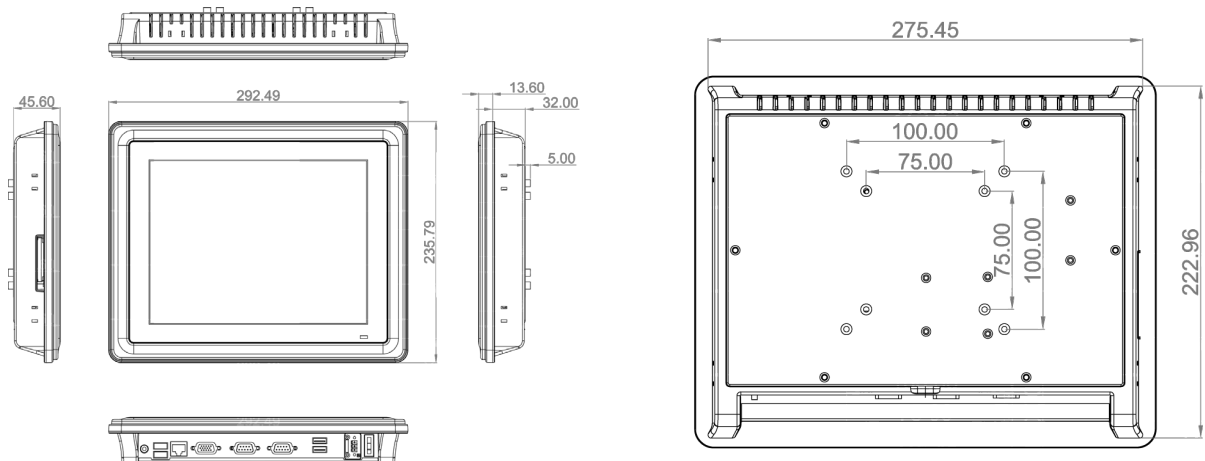
- 10.4" SVGA (800 x 600) color TFT LCD display
- Fanless cooling system with X86 CPU
- Ultra Slim design: thickness 45mm
- Super light weight: 1.8 kg
- Over-voltage protection fuse

### Specifications

System	
Main Board	SBC87830
CPU	X86 CPU
Chipset	Intel® 945GSE
System Memory	1 x DDR2 SODIMM max. up to 2GB
Storage Memory (optional)	1 x 2.5" SATA HDD 1 x CompactFlash™
BIOS	AMI 8 Mbit with RPL/PXE LAN boot ROM
Watchdog Timer	255 levels, 1~255 sec.
Onboard Graphics	Integrated in Intel® 945GSE
Expansion Interface	1 x Mini card
LCD Panel	
Size/Display Type	10.4" SVGA TFT LCD
Max. Resolution	800 x 600
Brightness (cd/m2)	230 nits
Viewing Angel (H/V)	120°/100°
Touch Screen Type	Resistive type
I/O Connector	
I/O Connector	1 x RS-232 (COM 2) 1 x RS-232/422/485 (COM 1) 4 x USB 2.0 1 x 10/100/1000Mbps Ethernet 1 x Audio (Line-out) 1 x VGA

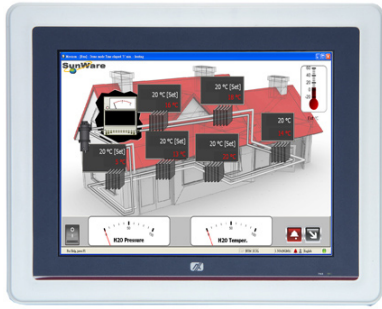
Mechanical & Environmental	
Operating Temp.	0°C~50°C (32°F~122°F) (with W.T. DRAM/HDD in airflow condition) 0°C~45°C (32°F~113°F) (with W.T. DRAM/HDD)
Relative humidity	10%~95% @40°C; non-condensing
Operation vibration	2G, 5~500Hz, random for CompactFlash™
Ingress Protection	Front panel: IP65, NEMA 4 rugged protection
Dimensions (W x D x H)	292.5 x 45.6 x 235.8 mm (11.52" x 1.80" x 9.28")
Weight (net/gross)	1.8 kg (3.96 lb)/3 kg (6.61 lb)
Power System	
Power Inpute(DC version)	10~30VDC with fuse over-current protection
Power Inpute(AC version)	AC-DC 60W power adapter
General	
Certification	CE, FCC, CCC compliance
Front Bezel	Plastic front bezel

### <Dimensions and Cutout>



WinCE OPC Based HMI

12.1"



## Features

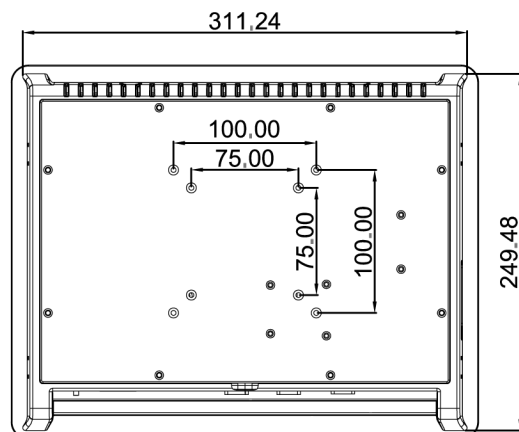
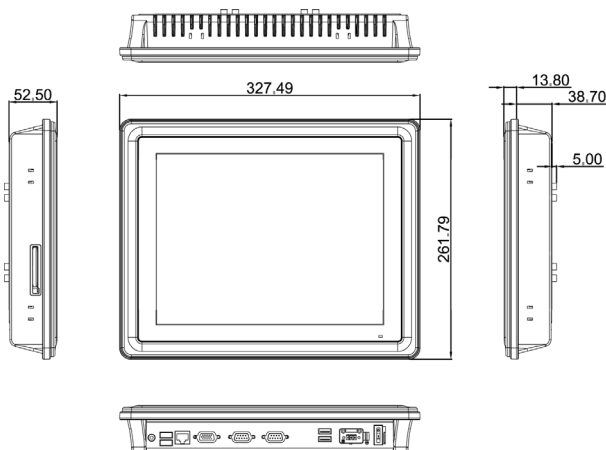
- 12.1" SVGA (800 x 600) color TFT LCD display
- Fanless cooling system with X86 CPU
- Ultra Slim design: thickness 52mm
- Super light weight: 2.4 kg
- Over-voltage protection fuse

## Specifications

System	
Main Board	SBC87830
CPU	X86 CPU
Chipset	Intel® 945GSE
System Memory	1 x DDR2 SODIMM max. up to 2GB
Storage Memory	1 x 2.5" SATA HDD (optional) 1 x CompactFlash™
BIOS	AMI 8 Mbit with RPL/PXE LAN boot ROM
Watchdog Timer	255 levels, 1~255 sec.
Onboard Graphics	Integrated in Intel® 945GSE
Expansion Interface	1 x Mini card slot
LCD Panel	
Size/Display Type	12.1" SVGA TFT LCD
Resolution	800 x 600
Brightness (cd/m2)	370 nits
Viewing Angel (H/V)	120°/100°
Touch Screen Type	Resistive type
I/O Connector	
I/O Connector	1 x RS-232 (COM 2) 1 x RS-232/422/485 (COM 1) 1 x VGA 1 x Audio (Line-out) 4 x USB 2.0 1 x 10/100/1000Mbps Ethernet

Mechanical & Environmental	
Operating Temp.	0°C~50°C (32°F~122°F) (with W.T. DRAM/HDD in airflow condition) 0°C~45°C (32°F~113°F) (with W.T. DRAM/HDD)
Relative humidity	10%~95% @40°C; non-condensing
Operation vibration	2G, 5~500Hz, random for CompactFlash™
Ingress Protection	Front panel: IP65, NEMA 4 rugged protection
Dimensions (W x D x H)	327.5 x 52.5 x 261. mm (12.9" x 2.07" x 10.3")
Weight (net/gross)	2.4 kg (5.29 lb)/3.84 kg (8.46 lb)
Power System	
Power Supply	10~30V <sub>DC</sub> , w/ over-current protection fuse
General	
Certification	CE, FCC, CCC compliance
Front Bezel	Plastic front bezel

## <Dimensions and Cutout>



WinCE 5.0/6.0 OPC Connectable Devices

Adam

Model Name	CPU	Adam2	Adam3
4011		●	●
4011D T/C			●
4012			●
4013			●
4014D		●	●
4015			●
4015T			●
4016			●
4017			●
4018			●
4018M			●
4019			●
4021		●	●
4024			●
4050		●	●
4052			●
4053			●
4055			●
4060			●
4080			●
4080D			●
4117			●
4118			●
4150			●
4914			●
5013			●
5017			●
5017UH			●
5018			●
5018P			●
5024		●	●
5050			●
5051		●	●
5051D			●
5051S			●

Allen Bradley

Model Name	CPU	Serial	Ethernet
MicroLogix 1000		●	●
MicroLogix 1200		●	●
MicroLogix 1200R		●	●
MicroLogix 1500		●	●
PLC5/10		●	●
PLC5/15		●	●
PLC5/20		●	●
PLC5/20E		●	●
PLC5/25		●	●
PLC5/30		●	●
PLC5/40		●	●
PLC5/40E		●	●
PLC5/60		●	●
PLC5/80		●	●
PLC5/80E		●	●
SLC 5/01		●	●
SLC 5/02		●	●
SLC 5/03		●	●
SLC 5/04		●	●
SLC 5/05		●	●
Power Meter	PM3000	●	
ControlLogix	All series	●	●
GuardLogix	All series	●	●
CompatLogix	All series	●	1756-ENBT 1756-EWEB
FlexLogix	All series	●	
DriveLogix	All series	●	●
SoftLogix	All series	●	●

BECKHOFF

Model Name	CPU	Serial	Ethernet
CX90x0	CX9000	●	●
	CX9010	●	●
CX10x0	CX1010	●	●
	CX1020	●	●
	CX1030	●	●

Danfoss

VLT™ Drives	Mode	Serial	Ethernet
	VLT HVAC Drive FC 100	●	
	VLT AQUA Drive FC 200	●	
	VLT AutomationDrive FC 300	●	
	VLT Micro Drive FC 51	●	
	VLT 2000 Series	●	
	VLT 2800 Series	●	
	VLT 2900 Series	●	
	VLT 3000 Series	●	
	VLT 3500 Series	●	
	VLT 5000 Series	●	
	VLT 5000 FLUX Series	●	
	VLT 6000 HVAC Series	●	
	VLT 6000 AQUA Series	●	
Soft Starters	MCD 3000	●	
	FCD 300	●	
Decentral Products	FCM 300	●	
	DMS 300	●	

Delta

Model Name	CPU	Serial	Ethernet
DVP20ES00R2		●	
DVP20ES00T2		●	
DVP24ES00R2		●	
DVP24ES00T2		●	
DVP24ES00R2		●	
DVP32ES00R2		●	
DVP32ES00T2		●	
DVP40ES00R2		●	
DVP40ES00T2		●	
DVP60ES00R2		●	
DVP60ES00T2		●	
DVP20EX00R2		●	
DVP20EX00T2		●	
DVP20EX11R2		●	
DVP14SS11R2		●	
DVP14SS11T2		●	
DVP12SA11R		●	
DVP12SA11T		●	
DVP10SX11R		●	
DVP10SX11T		●	

Delta

Model Name	CPU	Serial	Ethernet
DVP-SC	DVP12SC11R	●	
	DVP12SC11T	●	
	DVP16EH00R	●	
	DVP16EH00T	●	
	DVP20EH00R	●	
	DVP20EH00T	●	
	DVP32EH00R	●	
	DVP32EH00T	●	
	DVP40EH00R	●	
	DVP40EH00T	●	
	DVP48EH00R	●	
	DVP48EH00T	●	
	DVP64EH00R	●	
	DVP64EH00T	●	
	DVP80EH00R	●	
	DVP80EH00T	●	
	DVP16EH00R2	●	
	DVP16EH00T2	●	
	DVP20EH00R2	●	
	DVP20EH00T2	●	
	DVP32EH00R2	●	
	DVP32EH00T2	●	
	DVP40EH00R2	●	
	DVP40EH00T2	●	
	DVP48EH00R2	●	
	DVP48EH00T2	●	
	DVP64EH00R2	●	
	DVP64EH00T2	●	
	DVP80EH00R2	●	
	DVP80EH00T2	●	
DVP-SV	DVP28SV11R	●	●
DVP-PM	DVP20PM00D	●	●

Fatek

Model Name	CPU	Serial	Ethernet
NC Control Main Unit	Fbs-20MN	●	●
	Fbs-20MNT	●	●
	Fbs-20MNS	●	●
	Fbs-32MN	●	●
	Fbs-32MNT	●	●
	Fbs-32MNS	●	●
	Fbs-44MB	●	●
	Fbs-44MNT	●	●
	Fbs-44MNS	●	●
	Fbs-10MC	●	●
	Fbs-10MCT	●	●
	Fbs-10MCS	●	●
	Fbs-14MC	●	●
	Fbs-14MCT	●	●
	Fbs-14MCS	●	●
	Fbs-20MC	●	●
	Fbs-20MCT	●	●
	Fbs-20MCS	●	●
	Fbs-24MC	●	●
	Fbs-24MCT	●	●
	Fbs-24MCS	●	●
	Fbs-32MC	●	●
	Fbs-32MCT	●	●
	Fbs-32MCS	●	●
	Fbs-40MC	●	●
	Fbs-40MCT	●	●
	Fbs-40MCS	●	●
	Fbs-60MC	●	●
	Fbs-60MCT	●	●
	Fbs-60MCS	●	●
Advanced Main Unit	Fbs-10MA	●	●
	Fbs-10MAT	●	●
	Fbs-10MAS	●	●
	Fbs-14MA	●	●
	Fbs-14MAT	●	●
	Fbs-14MAS	●	●
	Fbs-20MA	●	●
	Fbs-20MAT	●	●
	Fbs-20MAS	●	●
Basic Main Unit	Fbs-10MA	●	●
	Fbs-10MAT	●	●
	Fbs-10MAS	●	●
	Fbs-14MA	●	●
	Fbs-14MAT	●	●
	Fbs-14MAS	●	●
	Fbs-20MA	●	●
	Fbs-20MAT	●	●
	Fbs-20MAS	●	●

Fatek

Model Name	CPU	Serial	Ethernet
Basic Main Unit	Fbs-24MA	●	●
	Fbs-24MAT	●	●
	Fbs-24MAS	●	●
	Fbs-32MA	●	●
	Fbs-32MAT	●	●
	Fbs-32MAS	●	●
	Fbs-40MA	●	●
	Fbs-40MAT	●	●
	Fbs-40MAS	●	●
	Fbs-60MA	●	●
	Fbs-60MAT	●	●
	Fbs-60MAS	●	●

Festo

Model Name	CPU	Serial	Ethernet
FEC	FC30	●	
	FC34	●	●
	FC400	●	●
	FC440	●	●
	FC600	●	●
	FC640	●	●
	FC660	●	●

Fuji Electric (MICREX-SX)

Model Name	CPU	Serial	Ethernet
MICREX-SX SPH200	NP1PH-08		
	NP1PH-16		
	NP1PS-32		
	NP1PS-32R		
	NP1PS-74		
	NP1PS-74R	NP1L-RS1 NP1L-RS2 NP1L-RS3 NP1L-RS4 NP1L-RS5	NP1L-ET1
	NP1PS-117		
	NP1PS-117R		
	NP1PS-245R		
SPH300EX	NP1PS-74D		
MICREX-SX SPH2000	NP1PM-48R		●
	NP1PM-48E		●
	NP1PM-256E		●

Fuji Electric (TLINK)

Model Name	CPU	Serial	Ethernet
MICREX-F	F30	●	
	F50	●	
	F60	●	
	F70S	●	
	F80	●	
	F80H	●	
	F81	●	
	F120	●	
	F120H	●	
	F120S	●	
	F200	●	
	F250	●	
	NP1PJ-08	●	
	NP1PJ-16	●	
	NP1PS-32	●	

GE

Model Name	CPU	Serial	Ethernet
MICRO-PLC	IC200UA003	●	
	IC200UAR014	●	
	IC200UDD104	●	
	IC200UDD112	●	
	IC200UDR001	●	
	IC200UDR002	●	
	IC200UDR003	●	
	IC200UJAL004	●	
	IC200UJAL005	●	
	IC200UJAL006	●	
	IC200UJAA007	●	
	IC200UAR028	●	
	IC200UDD110	●	
	IC200UDD120	●	
	IC200UDR005	●	
	IC200UDR006	●	
	IC200UDR010	●	
	IC200UDD212	●	
	IC200UEX009	●	
	IC200UEX010	●	
	IC200UEX011	●	
	IC200UEX012	●	
	IC200UEX013	●	
	IC200UEX014	●	
	IC200UEX015	●	
	IC200UEX122	●	
	IC200UEX209	●	
	IC200UEX210	●	
	IC200UEX211	●	
	IC200UEX212	●	
	IC200UEX213	●	
	IC200UEX214	●	
	IC200UEX215	●	
	IC200UEX222	●	
	IC200UEX616	●	
	IC200UEX626	●	
	IC200UEX636	●	
	IC200UEX010	●	

Supported PLC List

WinCE 5.0/6.0 OPC Connectable Devices

Model Name	CPU	Serial	Ethernet
90-30	CPU-311	●	●
	CPU-313	●	●
	CPU-323	●	●
	CPU-331	●	●
	CPU-340	●	●
	CPU-341	●	●
	CPU-350	●	●
	CPU-351	●	●
	CPU-352	●	●
	CPU-360	●	●
	CPU-363	●	●
	CPU-364	●	●
	CPU-374	●	●
	CPU-731	●	●
	CPU-732	●	●
90-70	CPU-772	●	●
	CPU-780	●	●
	CPU-782	●	●
	CPU-788	●	●
	CPU-789	●	●
	CPU-790	●	●
	CPU-915	●	●
	CPU-925	●	●
	CPU-928	●	●
	CPU-935	●	●
VersaMax	CPU-001	●	●
	CPU-002	●	●
	CPU-005	●	●
	CPU-E05	●	●

Model Name	CPU	Serial	Ethernet	
Hitachi	EH-D10DT	●	●	
	EH-D10DTP	●	●	
	EH-D10DR	●	●	
	EH-D14DT	●	●	
	EH-D14DTP	●	●	
	EH-A14DR	●	●	
	EH-D14DR	●	●	
	EH-A14AS	●	●	
	EH-A23DRP	●	●	
	EH-A23DRT	●	●	
	EH-D23DRP	●	●	
	EH-D28DT	●	●	
	EH-D28DTP	●	●	
	EH-A28DRP	●	●	
	EH-A28DRT	●	●	
	EH-A28DR	●	●	
	EH-D28DRP	●	●	
	EH-D28DRT	●	●	
	EH-D28DR	●	●	
	EH-A28AS	●	●	
	EH-D40DT	●	●	
	EH-D40DTPS	●	●	
	EH-D40DR	●	●	
	EH-A40DR	●	●	
	MICRO-EH	EH-D64DR	●	●
		EH-D64DT	●	●
		EH-D64DTPS	●	●
		EH-A64DR	●	●
		EH-D8ED	●	●
		EH-D8ER	●	●
		EH-D8ETPS	●	●
		EH-D8ET	●	●
		EH-D8EDR	●	●
		EH-D8EDTPS	●	●
		EH-D8EDT	●	●
		EH-D14EDT	●	●
		EH-D14EDTP	●	●
		EH-D14EDR	●	●
		EH-D14EDTPS	●	●
		EH-A14EDR	●	●
		EH-D16ED	●	●
		EH-D16ER	●	●
		EH-D16ETPS	●	●
		EH-D16ET	●	●
		EH-D28EDT	●	●
		EH-D28EDTP	●	●
		EH-D28EDTPS	●	●
		EH-D28EDR	●	●
		EH-A28EDR	●	●
	EH-150	EH-CPU104A	●	●
		EH-CPU208A	●	●
		EH-CPU316A	●	●
		EH-CPU516A	●	●
		EH-CPU548A	●	●
	H-200	CPU-02H	●	●
H-20	H Board	●	●	
H-300	CPUP-03H	●	●	
	CPU-03HA	●	●	
H-700	CPUP-07H	●	●	
	CPU-07HA	●	●	
H-2000	CPUP-20H	●	●	
	CPU-20HA	●	●	
H-2002	CPU2-20H	●	●	
H-702	CPU2-07H	●	●	
H-302	CPU2-03H	●	●	
H-1002	CPU2-10H	●	●	
H-4010	CPU3-40H	●	●	

Model Name	CPU	Serial	Ethernet
SJ-300	All series Inverter	●	●

Model Name	CPU	Serial	Ethernet	
IDEC	FC5A-D16RK1	●	●	
	FC5A-D16RS1	●	●	
	FC5A-D32K3	●	●	
	FC5A-D32S3	●	●	
	MicroSmart	FC5A-C10R2	●	●
		FC5A-C10R2C	●	●
		FC5A-C16R2	●	●
		FC5A-C16R2C	●	●
	FC5A-C24R2	FC5A-C24R2	●	●
		FC5A-C24R2C	●	●
		FC4A-C10R2	●	●
		FC4A-C10R2C	●	●
		FC4A-C16R2	●	●
		FC4A-C16R2C	●	●
		FC4A-C24R2	●	●
		FC4A-C24R2C	●	●
	FC4A-D20K3	FC4A-D20K3	●	●
		FC4A-D20RK1	●	●
		FC4A-D40K3	●	●
		FC4A-D20S3	●	●
FC4A-D20RS1	FC4A-D20RS1	●	●	
	FC4A-D40S3	●	●	
	FC3A-CP2K	●	●	
	FC3A-CP2KM	●	●	
OpenNet Controller	FC3A-CP2S	●	●	
	FC3A-CP2SM	●	●	
	Standard Mode	●	●	
Micro3	High-Speed Mode	●	●	

Model Name	CPU	Serial	Ethernet
Keyence	KV-700	KV-700	●
	KV-1000	KV-1000	●
	KV-3000	KV-3000	●
	KV-5000	KV-5000	●
			KV-LE20A
		KV-LE20V	●

Model Name	CPU	Serial	Ethernet	K-Sequence	
Koyo	DL05	D0-05AA	●	●	●
		D0-05DA	●	●	●
		D0-05AD	●	●	●
		D0-05AR	●	●	●
		D0-05AR	●	●	●
		D0-05DD	●	●	●
		D0-05DR	●	●	●
		D0-05DD-D	●	●	●
		D0-05DR-D	●	●	●
		D0-06DD1	●	●	●
DL06	D0-06DR	●	●	●	
	D0-06DA	●	●	●	
	D0-06AR	●	●	●	
	D0-06AA	●	●	●	
	D0-06DD1-D	●	●	●	
	D0-06DD2-D	●	●	●	
	D0-06DR-D	●	●	●	
DL105	F1-130DR	●	●	●	
	F1-130DR-D	●	●	●	
	F1-130-DR-CE	●	●	●	
	F1-130-DD	●	●	●	
	F1-130DD-D	●	●	●	
	F1-130DD-CE	●	●	●	
	F1-130AD	●	●	●	
F1-130DA	●	●	●		
F1-130AA	●	●	●		
DL205	D2-230	●	●	●	
	D2-240	●	●	●	
	D2-250-1	●	●	●	
	D2-260	●	●	●	
DL305	D3-340	●	●	●	
	D3-350	●	●	●	
DL405	D4-430	●	●	●	
	D4-440	●	●	●	
	D4-440DC-1	●	●	●	
	D4-440DC-2	●	●	●	
	D4-450	●	●	●	
	D4-450DC-1	●	●	●	
D4-450DC-2	●	●	●		

Model Name	CPU	Serial	Ethernet
LG	GM	GLOFA-GMR	●
		GLOFA-GM1	●
		GLOFA-GM2	●
		GLOFA-GM3	●
		GLOFA-GM4	●
		GLOFA-GM6	●
		GLOFA-GM7	●
MK	K80S	●	●
	K120S	●	●
	K200S	●	●
	K300S	●	●
	K1000S	●	●
XGB	XGB	●	●
	CPUH	●	●
XGK	CPUA	●	●
	CPU5	●	●
	CPUE	●	●

Model Name	CPU	Serial	Ethernet	
Mitsubishi	A0J2	●	●	
	A0J2H	●	●	
	A1N	●	●	
	A1S	●	●	
	A1SH	●	●	
	A1SJ	●	●	
	A2A	●	●	
	A2CCPUC24	●	●	
	A2N	●	●	
	MELSEC-A	A2SH	●	●
		A2U	●	●
		A2U-S1	●	●
		A2US	●	●
		A2US-S1	●	●
		A2USH-S1	●	●
A3A		●	●	
A3N		●	●	
A3U		●	●	
A4U		●	●	
MELSEC-F2	F2-20N	●	●	
	F2-40M	●	●	
	F2-60M	●	●	
MELSEC-FX	FX1N	●	●	
	FX1NC	●	●	
	FX2N	●	●	
MELSEC-QnA	FX2NC	●	●	
	FX3UC	●	●	
	Q2A	●	●	
	Q2A-S1	●	●	
	Q2AS	●	●	
	Q2ASH	●	●	
	Q2S-S1	●	●	
	Q3A	●	●	
	Q4A	●	●	
	Q4AR	●	●	
MELSEC-Q	Q00CPU	●	●	
	Q00JCPU	●	●	
	Q01CPU	●	●	
	Q02CPU	●	●	
	Q02CPU-A	●	●	
	Q02HCPU	●	●	
	Q02HCPU-A	●	●	
	Q06HCPU	●	●	
	Q06HCPU-A	●	●	
	Q12HCPU	●	●	
Q25HCPU	●	●		

Model Name	CPU	Serial	Ethernet
Mitsubishi Inverter	FR-E500	FR-E520	●
		FR-E520-NA	●
		FR-E520S-CH	●
		FR-E520S-EC	●
		FR-E540-NA	●
FR-A500	FR-E540-CH	●	
	FR-E540-EC	●	
	FR-A520	●	
	FR-A520-NA	●	
	FR-A520L	●	
	FR-A540	●	
	FR-A540-CH	●	
	FR-A540-EC	●	
	FR-A540-NA	●	
	FR-A540L	●	
FR-F500	FR-A540L-EC	●	
	FR-A540L-NA	●	
	FR-F540-CH	●	
FR-F540-EC	●		

Model Name	CPU	Serial	Ethernet
Omron	C200H	CPU11	●
		CPU31	●
CH200HE	CPU32	●	●
	CPU42	●	●
CH200HE-Z	CPU32	●	●
	CPU42	●	●
C200HG	CPU33	●	●
	CPU43	●	●
	CPU53	●	●
	CPU63	●	●
	CPU33	●	●
C200HG-Z	CPU43	●	●
	CPU53	●	●
	CPU63	●	●
	CPU31	●	●
	CPU33	●	●
C200HS	CPU33	●	●
	CPU34	●	●
C200HX	CPU44	●	●
	CPU54	●	●
	CPU64	●	●
	CPU34	●	●
	CPU44	●	●
C200HX-Z	CPU54	●	●
	CPU64	●	●
	CPU65	●	●
	CPU85	●	●
	CPU85	●	●
C500	CPU01	●	●
C1000H	CPU01	●	●

Supported PLC List



WinCE 5.0/6.0 OPC Connectable Devices

Omron

Model Name	CPU	Serial	Ethernet
C2000H	CPU01	●	
	CPU42	●	●
CJ1G-H	CPU43	●	●
	CPU44	●	●
	CPU45	●	●
	CPU65	●	●
CJ1H-H	CPU66	●	●
	CPU67	●	●
CJ1M	CPU11	●	●
	CPU12	●	●
	CPU13	●	●
	CPU21	●	●
	CPU22	●	●
	CPU23	●	●
CJ1G	CPU42	●	●
	CPU43	●	●
	CPU44	●	●
	CPU45	●	●
CQM1H	CPU51	●	
CS1G	CPU42	●	●
	CPU43	●	●
	CPU44	●	●
	CPU45	●	●
CS1H	CPU63	●	●
	CPU64	●	●
	CPU65	●	●
	CPU66	●	●
	CPU67	●	●
	CPU68	●	●
CV500	CPU01	●	
CV1000	CPU01	●	
CV2000	CPU01	●	
CVM1	CPU01	●	●
	CPU11	●	●
CVM1-V2	CPU01	●	●
	CPU11	●	●
	CPU21	●	●

Schneider Electric

Model Name	CPU	Serial	Ethernet
TSX Premium	TSX 574823	●	
	TSX 574823	●	
	PCX 571012	●	
	PCX 573512	●	
	PMX 57102	●	
	PMX 57202	●	
	PMX 57352	●	
	PMX 57452	●	
	TSX 57102	●	
	TSX 57202	●	
	TSX 57252	●	
	TSX 57302	●	
	TSX 57352	●	
	TSX 57402	●	
	TSX 57452	●	
	TSX 5730	●	
Twido	TSX 5710	●	
	TSX 5720	●	●
	TWD LCAA 10DRF	●	●
	TWD LCAA 16DRF	●	●
	TWD LCAA 24DRF	●	●
	TWD LMDA 20DTK	●	●
Quantum	TWD LMDA 20DUK	●	●
	TWD LMDA 20DRK	●	●
	TWD LMDA 40DTK	●	●
	TWD LMDA 40DUK	●	●
	140 CPU 13 02	●	●
	140 CPU 113 03	●	●
Momentum	140 CPU 413 12A	●	●
	140 CPU 543 12A	●	●
	17 CCS 700 00	●	●
	17 CCS 700 10	●	●
	17 CCS 760 00	●	●
	17 CCC 760 10	●	●
	17 CCS 780 00	●	●
	17 CCC 780 10	●	●
	17 CCS 960 20/30	●	●
	17 CCS 780 20/30	●	●

Toshiba

Model Name	CPU	Serial	Ethernet
EX-Series	EX100	●	
	EX200	●	
T-Series	T1-16	●	
	T1-28	●	
	T1-40	●	
	T1-40S	●	
	T1 Super	●	
	T2N	●	PU-235N PU-245N
	T2E	●	
	T3	●	
	T3H	●	EN311
	S2T	●	EN611 EN631 EN651A
V-Series (Model2000)	S2PU22A		EN611 EN621 ES621 EN631 EN641 EB641 EN651A EN661 FN661
	S2PU32A		
	S2PU72A		
	S2PU72D		
V-Series (Model3000)	S2PU82		
	S3PU21		EN711 EN721 EN731 EN741 EN751 EN761 FN711
	S3PU45A		
	S3PU55A		
	S3PU55B		
S3PU65A			

Panasonic

Model Name	CPU	Serial	Ethernet
FP2	FP2-C1	●	
	FP2-C1D	●	
	FP2-C1SL	●	
FP2SH	FP2-C2	●	
	FP2-C2P	●	
	FP2-C3P	●	
FP-X	AFPX-C14R	●	
	AFPX-C14TD	●	
	AFPX-C14T	●	
	AFPX-C14P	●	
	FAFPX-30R	●	
	AFPX-C30TD	●	
	AFPX-C30T	●	
	AFPX-30PD	●	
	AFPX-C30P	●	
	AFPX-C60R	●	
	AFPX-C60TD	●	
	AFPX-C60T	●	
	AFPX-C60PD	●	
	AFPX-C60P	●	
	FPΣ	FPG-C32TH	●
FPG-C32T		●	
FPG-C32T2H		●	
FPG-C32T2		●	
FPG-C24R2H		●	
FPG-C24R2		●	
FPG-C28P2H		●	
FPG-C28P2		●	
FPG-C32HTM		●	
FPG-C32TTM		●	
FPG-C32T2HTM		●	
FPG-C32T2T2M		●	
FP0	FGP-C24R2HTM	●	
	FPG-C24R2T2M	●	
	FPG-C28P2HTM	●	
	FPG-C28P2T2M	●	
	FP0-A21	●	
	FP0-A80	●	
FP0-A04V	●		
FP0-A04I	●		

Siemens

Model Name	CPU	PPI	Ethernet
S7-200 (PPI)	CPU 212	●	
	CPU 214	●	
	CPU 215	●	
	CPU 216	●	
	CPU 221	●	
	CPU 222	●	
	CPU 222CN	●	
	CPU 224	●	
	CPU 224CN	●	
	CPU 224XP	●	
	CPU 224XP CN	●	
	CPU 226	●	
	CPU 226CN	●	
	CPU 312	●	
	CPU 312C	●	
CPU 313C	●		
S7-300 (MPI)	CPU 313C-2 PIP	●	
	CPU 313C-2 DP	●	
	CPU 314	●	
	CPU 314C-2 PIP	●	
	CPU 314C-2 DP	●	
	CPU 315-2 DP	●	
	CPU 315-2 PN/DP	●	
	CPU 315F-2 DP	●	
	CPU 315F-2 PN/DP	●	
	CPU 315T-2 DP	●	
	CPU 317-2 DP	●	
	CPU 317-2 PN/DP	●	
	CPU 317F-2 DP	●	
	CPU 317F-2 PN/DP	●	
	CPU 318-2 DP	●	
Momentum (MPI)	CPU 319-3 PN/DP	●	
	SIPLUS CPU 312C	●	
	SIPLUS CPU 313C	●	
	SIPLUS CPU 313C-2 DP	●	
	SIPLUS CPU 314C	●	
	SIPLUS CPU 314C-2 DP	●	
	SIPLUS CPU 315-2DP	●	
	SIPLUS CPU 315-2PN/DP	●	
	SIPLUS CPU 315F-2DP	●	
	SIPLUS CPU 317-2PN/DP	●	
S7-400 (MPI)	CPU 412-1	●	
	CPU 412-2	●	
	CPU 414-2	●	
	CPU 414-3	●	
	CPU 416-2	●	
	CPU 416-3	●	
S7-400H/FFH (MPI)	CPU 417-4	●	
	CPU 414-4H	●	
	CPU 417-4H	●	
S5 (3964/3964R)	S5 90U		
	S5 95U	CP 521 SI	
	S5 100U		
	S5 115U		
	S5 135U	CP 524	
	S5 155U	CP 525	

Vigor

Model Name	CPU	Serial	Ethernet
VB	VB0	●	
	VB1	●	
	VB2	●	
VH	VH-10MR	●	
	VH-14MR	●	
	VH-20MR	●	
	VH-24MR	●	
	VH-28MR	●	
	VH-32MR	●	
	VH-40MR	●	
	VH-60MR	●	
	VH-20AR	●	
	VH-20AR	●	
M	M1-CPU1	●	

Yaskawa

Model Name	CPU	Serial	Ethernet
Memocon	U-84	●	
	U-84J	●	
	U-84S	●	
	GL40S	●	
	GL60S	●	
	GL60H	●	
	GL70H	●	
	GL120	●	
	GL130	●	
	Control Pack	CP-9200	●
CP-9200H		●	●
CP-9200SH		●	●
PROGIC-8	PRIGIC-8	●	
MP900	MP920	●	●
	MP930	●	●
	MP940	●	●
	MP2200	●	●
	MP2000	●	●
MP2000	MP2300S	●	●
	MP2300	●	●
	MP2310	●	●
	MP2400	●	●
			●

Yaskawa Inverter

Model Name	CPU	Serial	Ethernet
Inverter	A1000	●	
	V1000	●	
	J1000	●	
	T1000	●	

Yokogawa

Model Name	CPU	Serial	Ethernet
FA-M3	F3SP05-0P	●	●
	F3SP08-0P	●	●
	F3SP21-0N	●	●
	F3SP25-2N	●	●
	F3SP28-3N	●	●
	F3SP28-3S	●	●
	F3SP35-5N	●	●
	F3SP38-6N	●	●
	F3SP38-6S	●	●
	F3FP36-3N	●	●
	F3SP53-4H	●	●
	F3SP53-4S	●	●
	F3SP58-6H	●	●
	F3SP58-6S	●	●
	F3SP59-7S	●	●
	F3SP66-4S	●	●
	F3SP67-6S	●	●
	F3BP20-0N	●	●
	F3BP30-0N	●	●

Supported PLC List